

**SHALE, DONNA FILL SUBGRADE**

- A. Subgrade soils shall be all materials used for subgrade including in-situ materials and fill materials.
- B. Subgrades for pavement shall be stabilized by mechanical compaction.
- C. Donna Fill subgrade shall be compacted to at least 95 percent of maximum density as determine by the modified proctor method. Shale subgrade shall be compacted to at least 92 percent of maximum density as determine by the modified proctor method. Moisture content shall be +/- 3% of optimum moisture unless otherwise supported by the Engineer.
- D. Donna Fill subgrade may be placed and compacted in up to 24" lifts. Shale subgrade shall be placed and compacted in no less than 18" lifts.
- E. Subgrade shall be prepared in such a manner that the aggregate surface course shall be placed on a firm foundation that is stable and free from soft spots, pumping, dust pockets, wheel ruts, or other defects.
- F. Quality control testing shall be as specified below.

**AGGREGATE SURFACE COURSE**

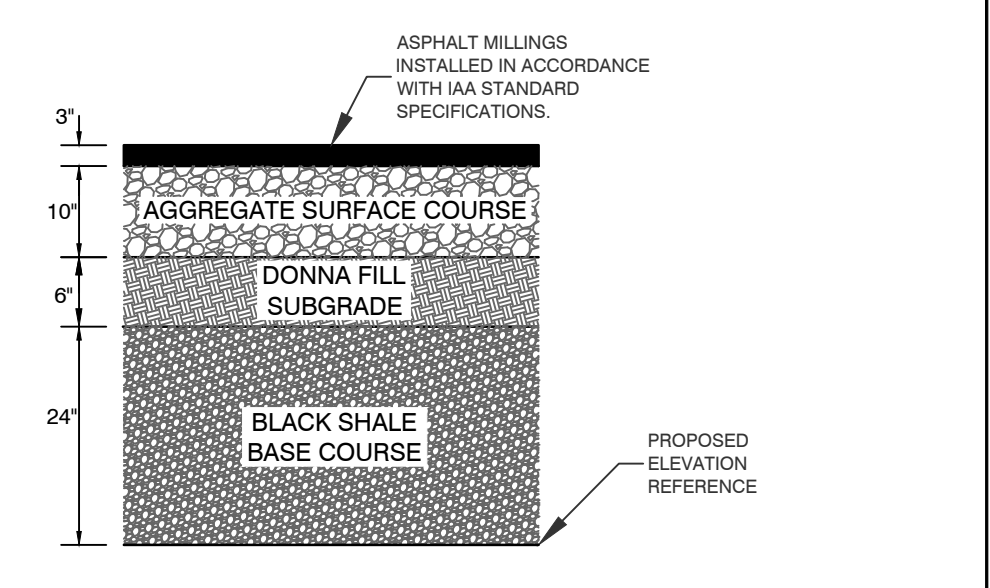
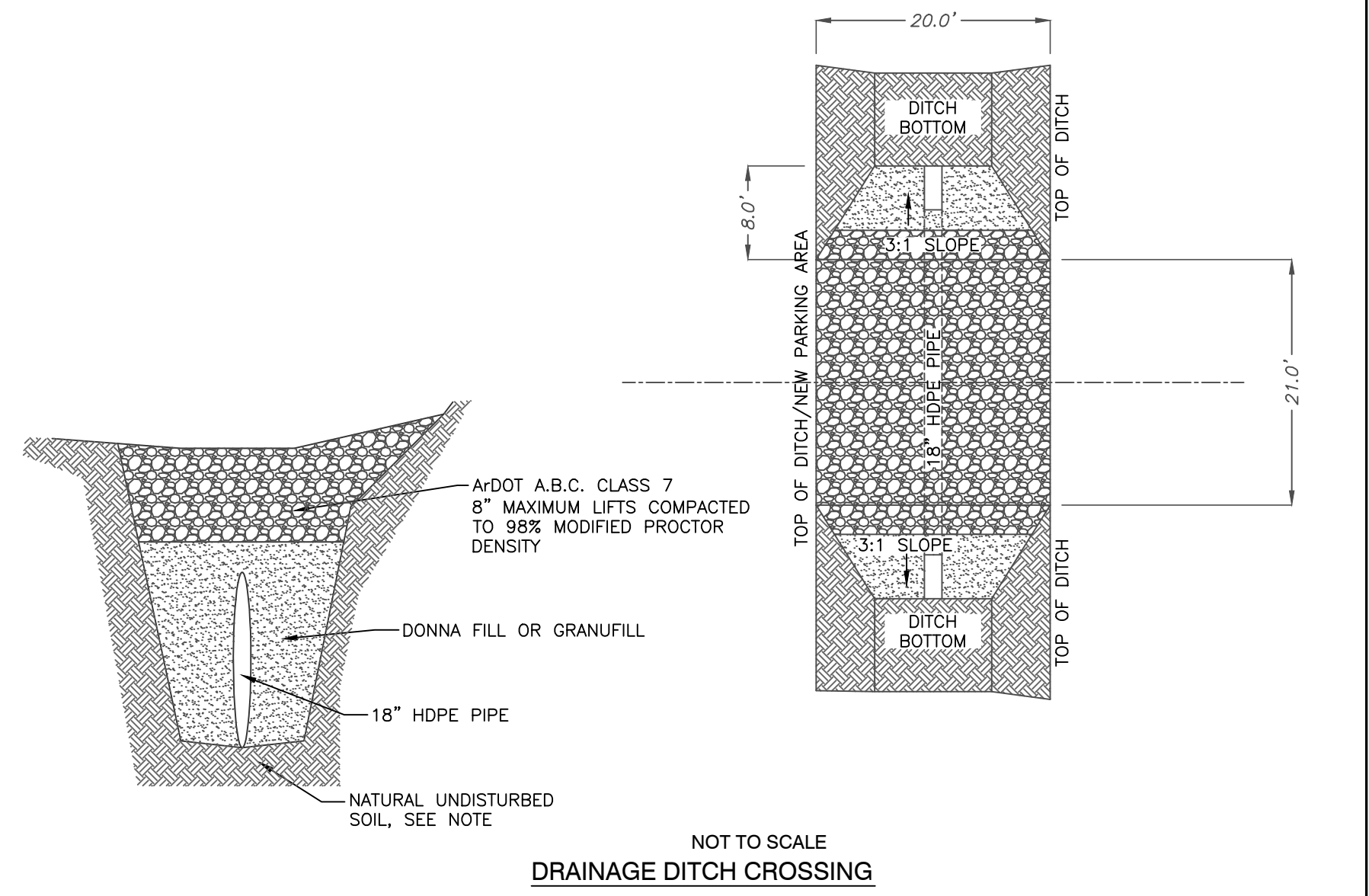
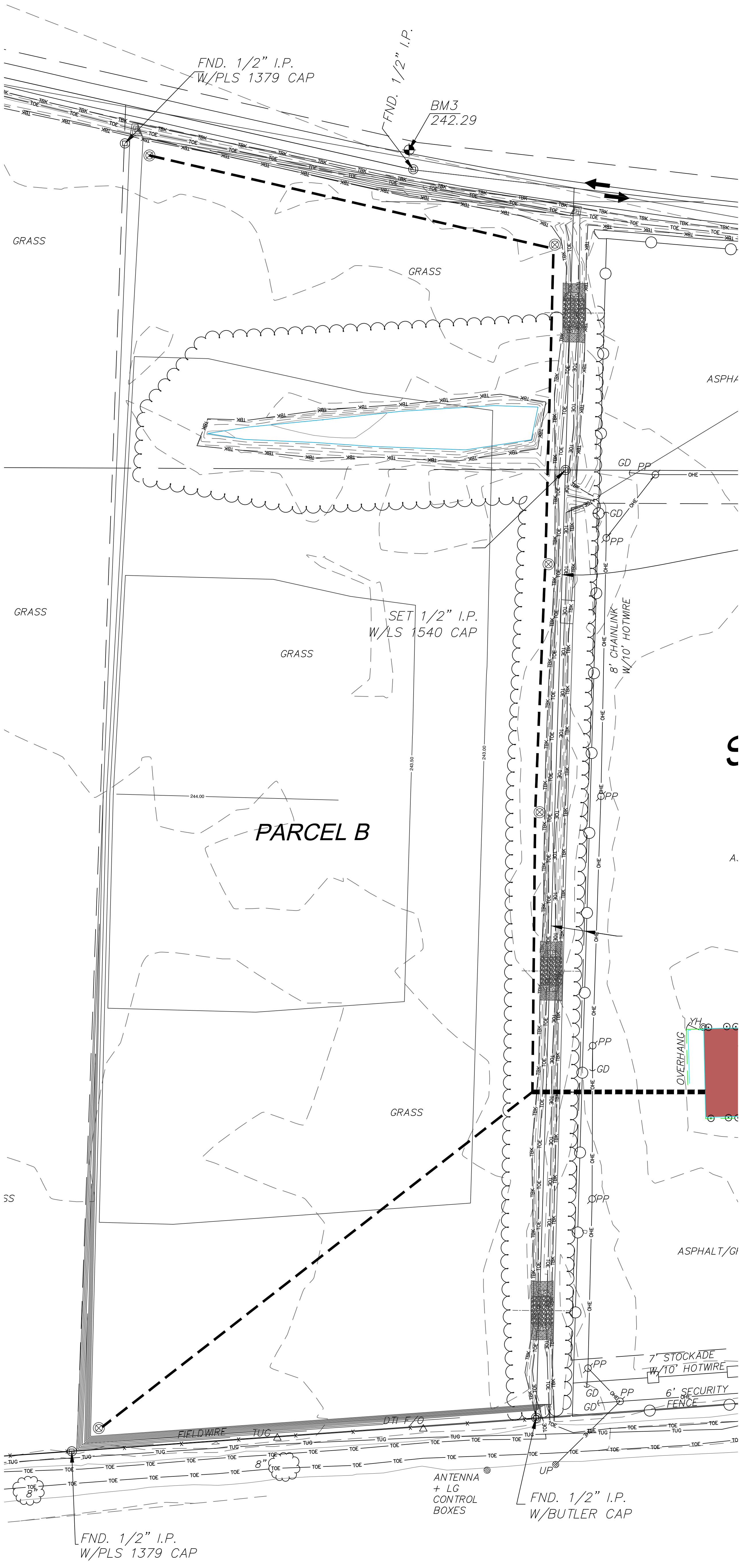
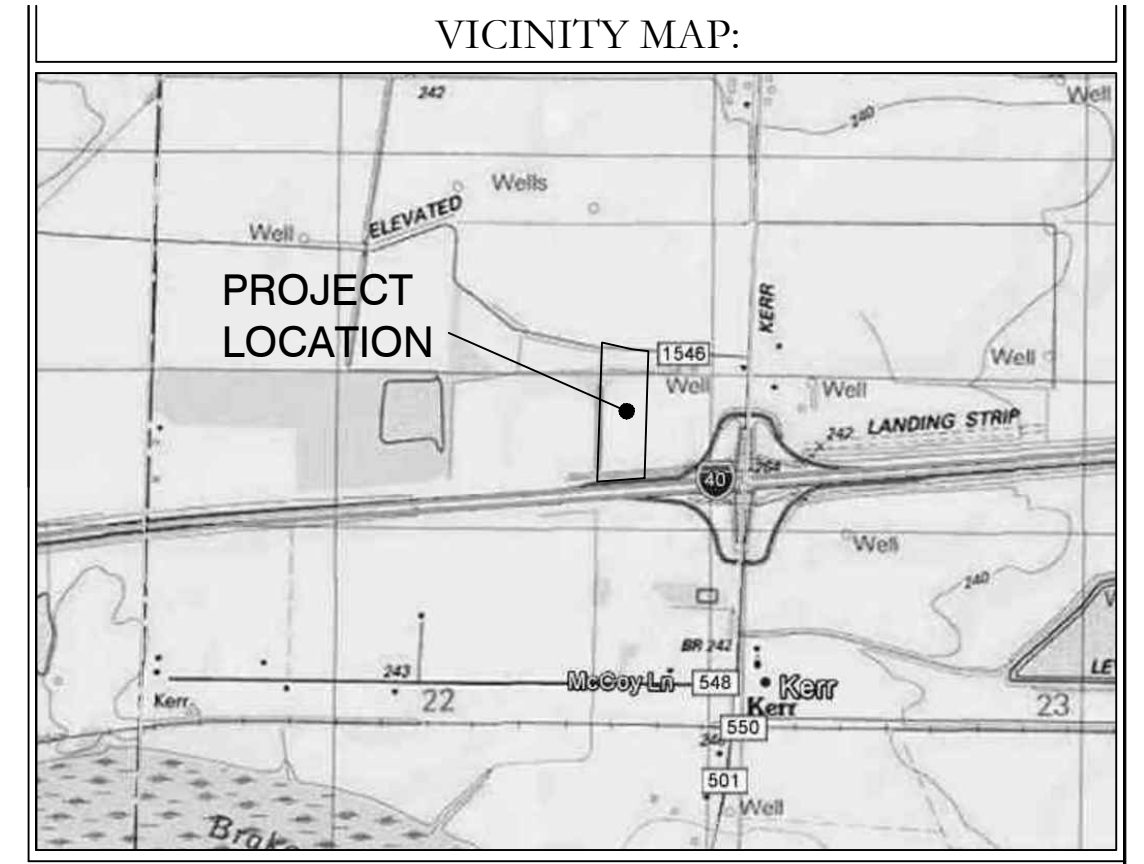
- A. Aggregate surface course material shall be crushed stone meeting the requirements of ArDOT Class 7 aggregate base course as specified in the latest edition of ArDOT Standard Specifications.
- B. Aggregate surface course shall be compacted to 98 percent modified proctor density minimum. Moisture content shall be +/- 3% of optimum moisture.

**SURFACE COURSE**

- A. Surface course shall be asphalt millings installed in accordance with IAA standard specifications.

**QUALITY CONTROL TESTING AND INSPECTIONS**

- A. Materials and construction employed in site improvements shall be subject to inspection and quality control testing. All testing of materials and construction shall be provided and paid for by the Contractor.
- B. The Contractor shall provide for inspections of improvements during construction. The inspections shall be accomplished under the supervision of the Engineer of Record. The Engineer of Record shall provide certification that all materials and construction conform to the approved plans and specifications and with these minimum standards.
- C. The Engineer of Record shall furnish inspection whenever a critical construction activity is taking place. This means that a representative of the Engineer of Record must be on-site whenever a critical construction activity is taking place.
- D. All field tests required for a project shall be witnessed by the Engineer of Record, contractor, or other authorized representatives.
- E. The Engineer shall be notified at least one day in advance of any test(s). It is the responsibility of the contractor to coordinated the scheduling of all tests with the Engineer.

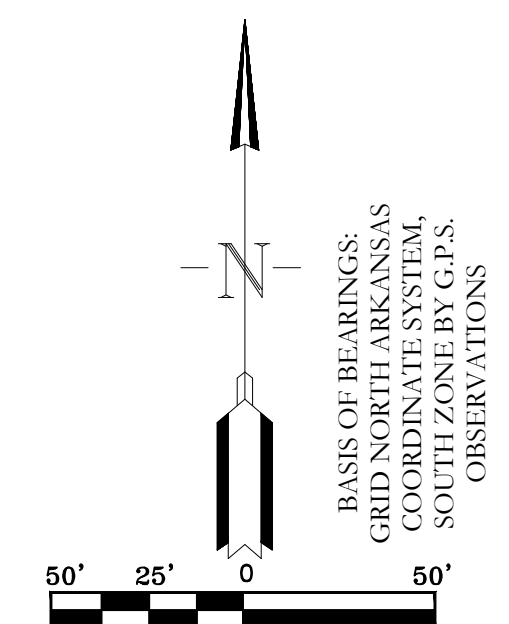


**UTILITY STATEMENT:**  
THE UNDERGROUND UTILITIES SHOWN HAVE BEEN LOCATED FROM FIELD SURVEY INFORMATION AND EXISTING DRAWINGS. AN ARKANSAS ONE CALL LOCATE WAS REQUESTED ON 2-1-18 AND A TICKET NO. 180201-0564 WAS ASSIGNED TO THIS PROJECT. THE SURVEY WAS PERFORMED ON 2-27-18 AND ALL VISIBLE MARKED UTILITIES LOCATED ARE SHOWN ON THIS SURVEY. THE SURVEYOR MAKES NO GUARANTEE THAT THE UNDERGROUND UTILITIES SHOWN COMPRISE ALL SUCH UTILITIES IN THE AREA, EITHER IN SERVICE OR ABANDONED. THE SURVEYOR FURTHER DOES NOT WARRANT THAT THE UNDERGROUND UTILITIES SHOWN ARE IN THE EXACT LOCATION INDICATED ALTHOUGH HE DOES CERTIFY THAT THEY ARE LOCATED AS ACCURATELY AS POSSIBLE FROM INFORMATION AVAILABLE. THE SURVEYOR HAS NOT PHYSICALLY LOCATED THE UNDERGROUND UTILITIES.

**LEGEND**

ALPHA □ ALPHA	PP ○ POWER POLE
AS □ AUTO SPRINKLER	LP ○ LIGHT POLE
AC □ AIR CONDITIONER	UP ○ UTILITY POLE
EPD □ ELEC. PED.	GD ⊕ GUY ANCHOR
EM □ ELEC. METER	GP ○ GUARD POST
ET □ ELEC. TRANS.	GM ⊕ GAS METER
TPD □ TELE. PED.	WM ⊗ WATER METER
TVPD □ CABLE PED.	WMP ⊗ WATER METER PIT
AD ○ AREA DRAIN	WNT ○ VENT PIPE
CO ○ CLEAN OUT	FH ⊕ FIRE HYDRANT
FO ○ FIRE DETECTOR	FV ⊕ FIRE VALVE
DS ⊕ DOWN SPOUT	WV ⊕ WATER VALVE
FP ⊕ FLAG POLE	GV ⊕ GAS VALVE
EMK Δ ELEC. MARKER	PLB □ PULL BOX
F/O Δ FIBER OPTIC MARKER	TCB □ TRAFFIC CONTROL BOX
GMK Δ GAS MARKER	TSL ⊕ TRAFFIC SIGNAL LIGHT
MRK Δ UTILITY MARKER	SCV ⊕ SPRINKLER VALVE
PMK Δ PIPELINE MARKER	YL ○ YARD LIGHT
TMK Δ CABLE MARKER	YH ⊕ YARD HYDRANT
TUG Δ TELE. MARKER	YH ⊕ YARD HYDRANT
MW Δ MONITORING WELL	STG ⊕ STORM GRATE
MB ○ MAILBOX	VNT ○ VENT PIPE
⊙ GREASE TRAP	↘ GATE
SS ○ SANITARY SEWER	HC ○ HANDICAPPED SIGN
SW ○ STORM WATER	○ SIGN
⊙ LAMP HOLE	⊕ BENCHMARK ELEVATION
⊙ TELEPHONE	○ TREE
⊙ CABLE TV	○ BUSH
⊙ ELECTRIC	○ HANDICAPPED SPACE
⊙ WATER	○ GAS LINE
— X — BARBWIRE/FIELDWIRE FENCE	— W — WATER LINE
— □ — STOCKADE FENCE	— F/O — FIBER OPTIC
— ○ — CHAINLINK FENCE	— U/E — U/E ELECTRIC LINE
— ○ — OHE OVERHEAD ELECTRIC	— TUG — TUG UNDERGROUND TELEPHONE
— TBK — TOP OF BANK	— U/TV — U/TV UNDERGROUND CABLE TV
— TOE — TOE OF BANK	— SS — SANITARY SEWER
— ○ — TREE LINE	— STS — STORM SEWER
— ○ — HEDGE LINE	— (4) 2" CONDUITS

P.O.C. POINT OF COMMENCEMENT  
P.O.B. POINT OF BEGINNING  
PH PORCH/DECK HEIGHT  
FF FINISHED FLOOR ELEVATION



**HOPE CONSULTING ENGINEERS - SURVEYORS**  
117 S. Market Street, Benton, Arkansas 72015  
PH. (501)315-2626 FAX (501) 315-0024 www.hopeconsulting.com

FOR USE AND BENEFIT OF:  
**INSURANCE AUTO AUCTION, INC**

SITE PLAN  
PRELIMINARY PARKING LAYOUT  
LONOKE COUNTY, ARKANSAS

DATE: 03/21/2018	C.A.D. BY: JPP	DRAWING NUMBER:
REVISED: 9-24-2018	CHECKED BY:	18-0283
SHEET:	SCALE: AS SHOWN	

KS/LAND PROJECTS/2018/COMMERCIAL/2018/18-0283/INSURANCE AUTO AUCTIONS/18-0283-INSURANCE AUTO AUCTIONS/CLEAN\_R-2.DWG